

# NetStaX EIPScan

EtherNet/IP Scanner Simulator

Pyramid Solutions' NetStaX™ EtherNet/IP Scanner Simulation Tool (EIPScan) is a PC/Windows™ application that simulates an EtherNet/IP Scanner and Adapter Class device (connection client and server) to enable product engineers to test and debug EtherNet/IP connected products.

EIPScan provides EtherNet/IP I/O Server, I/O Client, Message Server and Message Client functionality. EIPScan is capable of originating a variety of I/O connections based on the user set connection configuration. EIPScan is compatible with Rockwell Software's RSNetWorX™ for EtherNet/IP for local or remote network configuration.

## EIPScan Features

### Simulation and Testing

- Graphically add and display devices on the network
- Configure and schedule I/O and connected Explicit connections
- View input data and modify output data
- Send connected and unconnected explicit messages
- Automated testing of explicit and implicit connections

### EtherNet/IP Compatibility

- Scanner Class (client / originator) functionality
- Adapter Class (server / target) functionality
- UCMM (unconnected) explicit messaging client and server
- Class 3 (connected) explicit messaging client and server
- Class 1 (I/O) implicit connection client and server

### Platform Compatibility

- Microsoft Windows XP, Vista, Windows 7
- Minimum PC: Pentium II, 233MHz

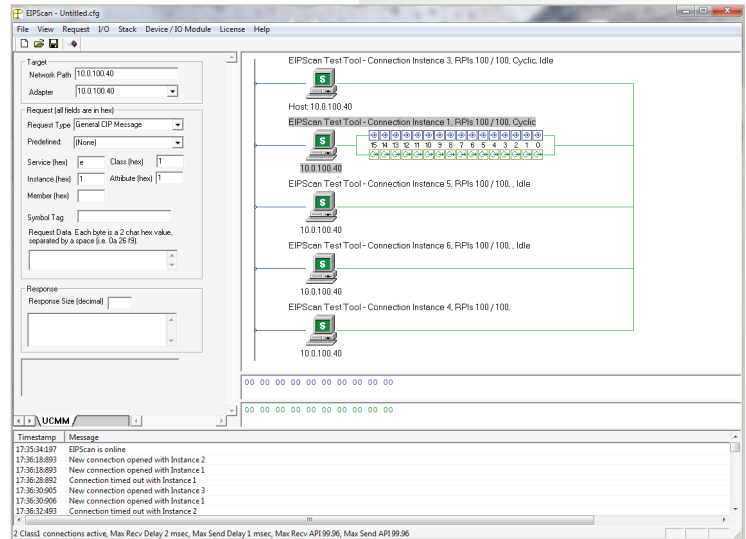
### Supported / Included Objects

- Message Router
- Connection Manager
- Identity
- Ethernet Link
- TCP/IP
- Port
- Assembly
- Connection Configuration Object
- File Object
- CIP Modbus Translation (routing to Modbus/TCP)

### Product includes:

- EIPScan executables (logging and non-logging)
- EIPScan user reference manual
- EDS file compatible with RSNetWorX for EtherNet/IP

- Visual connection and data GUI
- Aids development and testing
- Rich set of features
- Client and Server functionality



EtherNet/IP is a registered trademark of ODVA

RSNetWorX is a registered trademark of Rockwell Software

Windows is a registered trademark of Microsoft Corporation

### Contact us.

For more information, please contact:

**Glenn Beal:** +1 248 549 1200 x231  
gbeal@pyramidsolutions.com